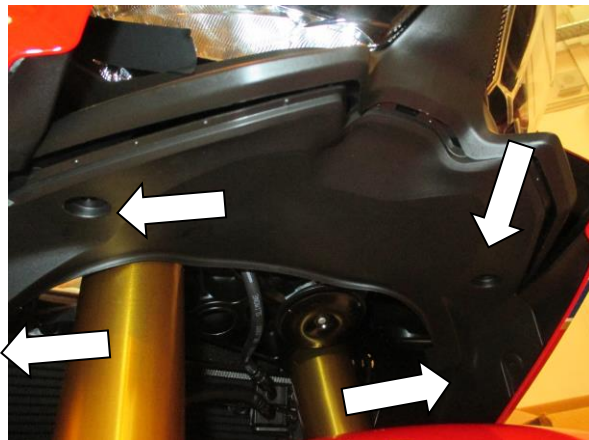




**Fitting Instructions for RAD0212 Radiator Guard**  
**HONDA CBR1000RR, SP & SP2 '17-**



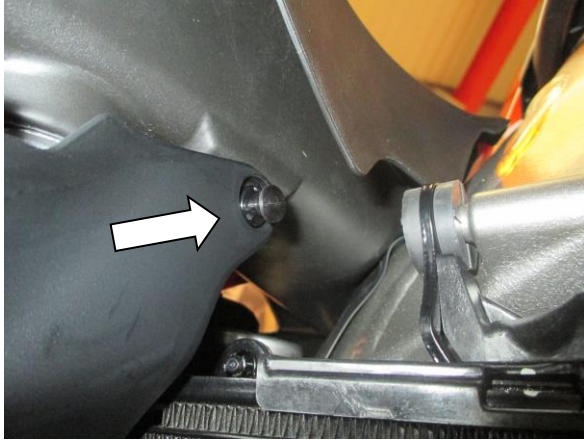
**In This Kit There Should Be**  
**1x Radiator Guard (RAD0212)**  
**2x Cable Ties**  
**3x 100mm Lengths of self-adhesive Foam**



Picture 1



Picture 2



Picture 3



Picture 4



Picture 5



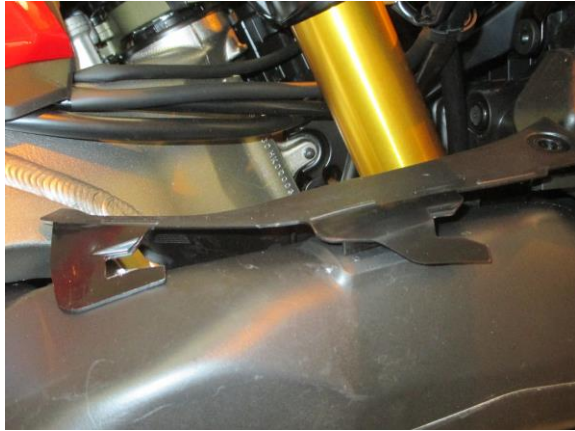
Picture 6



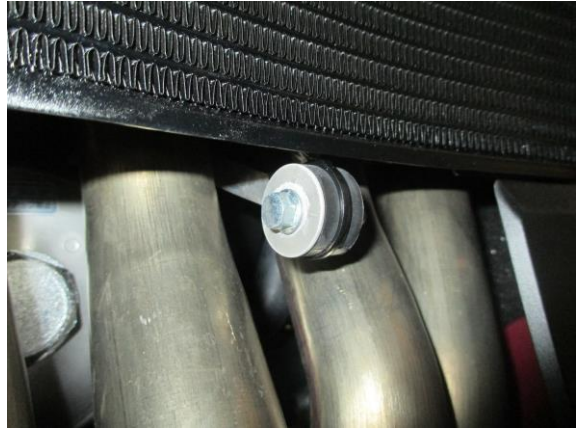
Picture 7



Picture 8



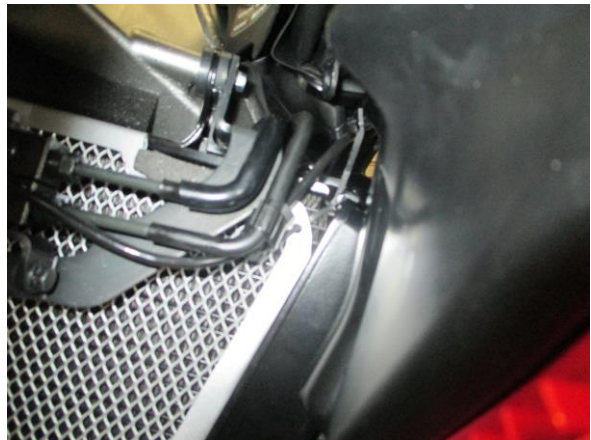
Picture 9



Picture 10



Picture 11



Picture 12



Picture 13



Picture 14



Picture 15



Picture 16

#### **GENERAL TORQUE SETTINGS**

M4 BOLT = 8Nm

M5 BOLT = 12Nm

M6 BOLT = 15Nm

M8 BOLT = 20Nm

M10 BOLT = 40Nm

M12 NYLOC NUT = 40Nm

#### **TOOLS REQUIRED**

- Socket set to 3, 4 & 5mm allen key bit & wrench.
  - Socket set to include 8mm socket.
  - Phillips screwdriver.
  - Cable cutters.

#### **FITTING INSTRUCTIONS**

- To fit the radiator guard, the right side fairing must first be removed from the motorcycle.
- To do this, start by removing the plastic panel under the nose of the bike by removing the four plastic fasteners with a Phillips screwdriver, as arrowed in pictures 1 & 2.
- Remove this plastic panel from the motorcycle.
- To remove the right side fairing, start by removing the push/pull rivet that secures the inside black plastic in place in the area around the top of the radiator, as arrowed in picture 3. Simply pull the rivet head to remove the rivet.
- Remove the three bolts that secure the lower edge of the fairing to the bellypan, as shown in picture 4.
- Remove the two bolts that secure the top edge of the fairing to the nose, as shown in picture 5.
- Remove the bolt that secures the fairing to the black plastic that covers the intake tunnel, as shown in picture 6.

R&G Racing

Unit 1, Shelley's Lane, East Worldham, Alton, Hampshire, GU34 3AQ

Tel: +44 (0)1420 89007 Fax: +44 (0)1420 87301 [www.rg-racing.com](http://www.rg-racing.com) Email: [info@rg-racing.com](mailto:info@rg-racing.com)



- The fairing can now be removed. Gently unclip the lower corner of the side fairing from the front of the bellypan and work your way along the edge, unclipping the fairing tabs from the slots in the bellypan as you go along, as shown in picture 7.
- At the top rear corner of the fairing, where it meets the frame, there is a plastic prong that fits into a rubber mount that needs to be lifted upward to release, as shown in picture 8.
- With this out, the fairing should be free to slide forward and out to remove from the motorcycle. *Picture 9 shows the final plastic mounting points on top of the intake tunnels that the fairing needs to be removed from and the inner radiator cowling plastic will come away with the fairing.*
- To fit the radiator guard to the bike, cut the foam strip provided into 10mm wide pieces and stick them to the back of the radiator guard frame, so that they sit between the radiator guard and the radiator.
- Stick a length of self-adhesive foam on the front of the radiator in the top right corner as you look at it front on. This area of the radiator guard sits between the radiator and ABS line and mounts, as shown in picture 12.
- Remove the bolt that secures the bottom of the radiator in place, as shown in picture 10.
- Offer the R&G Radiator Guard into place and slide upwards so that the top corner sits between the radiator and ABS lines, as shown in pictures 11 & 12. *There is an additional slotted hole in the top corner which can also be used to secure the radiator guard in place using one of the cable ties supplied and looping through the radiator matrix. This is advised if fitting to a race/track bike where the ABS lines and mounts have been removed, as shown in picture 13.*
- Take the remaining cable tie and loop it through the slotted hole on the remaining top corner of the radiator guard and then around the top radiator mount, before tightening, as shown in pictures 14 & 15.
- Re-fit the original bolt through the lower mount of the radiator guard and tighten into the threaded boss on the radiator, as shown in picture 16.
- Ensure the radiator guard is correctly fitted before tightening the two cable ties and lower bolt.
- Re-fit the right side fairing in a reverse procedure to how it was removed.

ISSUE 1 25/04/2017 (AR)

**Digital copies of these instructions are available to download from [www.rg-racing.com](http://www.rg-racing.com)**

#### CONSUMER NOTICE

The catalogue description and any exhibition of samples are only broad indications of the Products and R&G may make design changes which do not diminish their performance or visual appeal and supplying them in such state shall conform to the order. The Buyer acknowledges no representation or warranty (other than as to title) has been given or will apply to the Products other than those in R&G's order or confirmation and the Buyer confirms it has chosen the Products as being of merchantable quality and suitable for its particular purposes. Where R&G fits the Products or undertakes other services it shall exercise reasonable skill and care and rectify any fault free of charge unless the workmanship has been disturbed. The Buyer is responsible for ensuring that the warranty on the motorcycle is not affected by the fitting of the Products. On return of any defective Products R&G shall at its option either supply a replacement or refund the purchase money but shall not be liable if the Products have been modified or used or maintained otherwise than in accordance with R&G's or manufacturer's instructions and good engineering practice or if the defect arises from accident or neglect. Other than identified above and subject to R&G not limiting its liability for causing death and personal injury, it shall not be liable for indirect or consequential loss and otherwise its liability shall be limited to the amounts paid by the Buyer for the Products or the fitting or service concerned. These terms do not affect the Buyer's statutory rights.

#### R&G RACING RETURNS POLICY (NON-FAULTY GOODS)

Returns must be pre-authorized (if not pre-authorized the return will be rejected). Goods may only be returned direct to us if they were purchased direct from us (customer must prove if necessary). Otherwise to be returned to original vendor. Goods must be in re-sellable condition, in the opinion of R&G Racing. All returns are subject to a 25% restocking and handling fee (25% of the gross value exc. P&P – at the prevailing price at time of purchase). The customer must pay any and all carriage charges. No returns of discontinued products, unless within 14 days of purchase. This policy does not affect your statutory rights and does not refer to faulty goods.

R&G Racing

Unit 1, Shelley's Lane, East Worldham, Alton, Hampshire, GU34 3AQ

Tel: +44 (0)1420 89007 Fax: +44 (0)1420 87301 [www.rg-racing.com](http://www.rg-racing.com) Email: [info@rg-racing.com](mailto:info@rg-racing.com)



**NOTICE DE MONTAGE POUR RAD0212 GRILLE DE PROTECTION**  
**HONDA CBR1000RR, SP & SP2 '17-**



**Le kit doit contenir :**

- 1 x Grille de protection radiateur (RAD0212)**
- 2x Colliers de serrage**
- 3x 100mm Longueurs de mousse autocollante.**

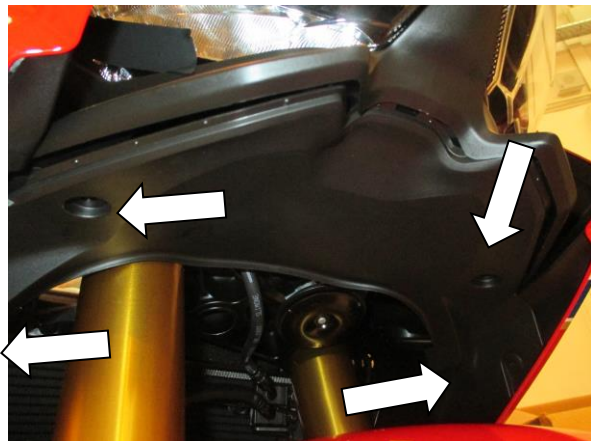


Photo 1



Photo 2

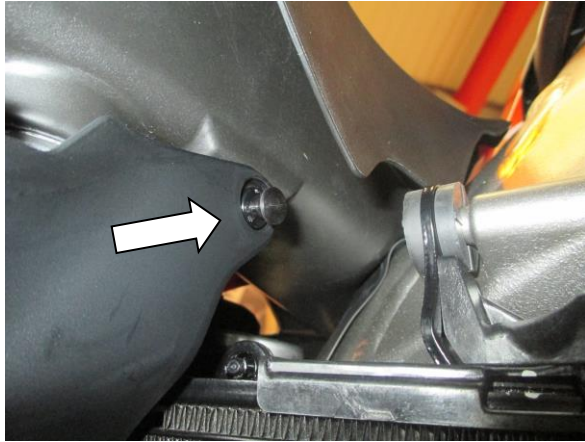


Photo 3



Photo 4



Photo 5



Photo 6



Photo 7



Photo 8

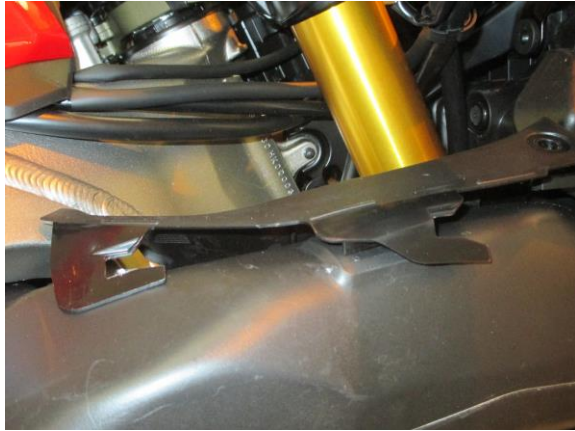


Photo 9

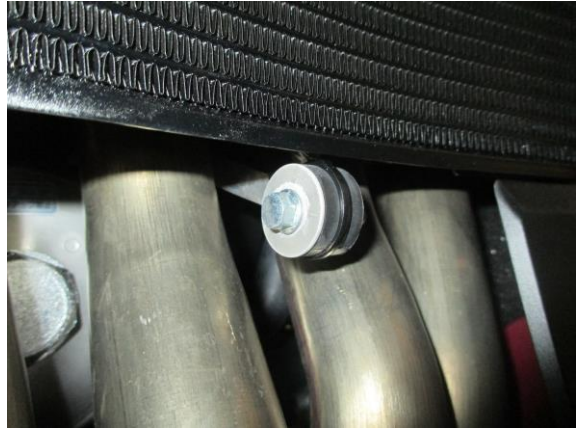


Photo 10



Photo 11

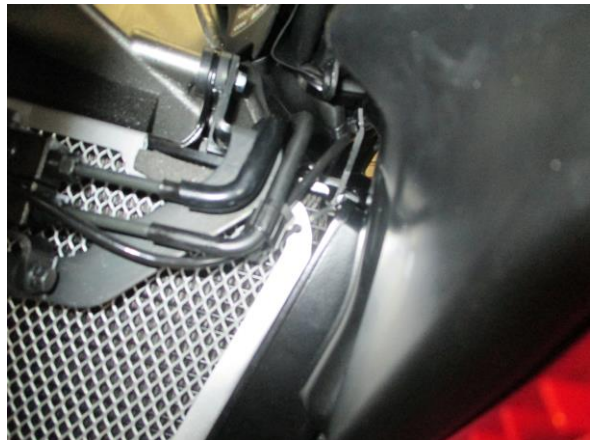


Photo 12



Photo 13



Photo 14





Photo 15



Photo 16

#### **COUPLES DE SERRAGE RECOMMANDES**

M4 BOULON = 8Nm  
M5 BOULON = 12Nm  
M6 BOULON = 15Nm  
M8 BOULON = 20Nm  
M10 BOULON = 40Nm

#### **OUTILS REQUIS**

- Clé Allen 3, 4 & 5mm.
  - Douille 8mm.
- Tournevis cruciforme.
- Pince coupante.

#### **NOTICE DE MONTAGE :**

- Pour monter la grille de protection, le carénage du coté droit doit être enlevé de la moto.
- Pour cela, commencez par enlever le panneau en plastique sous le nez de la moto en enlevant les 4 attaches rapides avec un tournevis, voir photos 1 & 2.
- Enlever le panneau en plastique de la moto.
- Pour enlever le carénage du coté droit, commencez par enlever le rivet qui fixe le plastique noir interne en place à l'endroit situé autour du haut du radiateur, voir photo 3. Tirer la tête du rivet pour l'enlever.
- Enlever les 3 boulons qui fixent le bord inférieur du carénage au ventre de la moto, voir photo 4.
- Enlever les 2 boulons qui fixent le bord supérieur du carénage au nez, voir photo 5.
- Enlever le boulon qui fixe le carénage au plastique noir qui couvre le tunnel d'admission, voir photo 6.



- Le carénage peut maintenant être enlevé. Déclipser le coin inférieur du carénage latéral depuis l'avant du ventre puis continuer tout le long, en déclinçant les onglets de carénage des onglets situés sur le ventre, voir photo 7.
- Sur le coin supérieur arrière du carénage, à l'endroit où il touche le cadre, il y a une fourchette qui se place dans les supports en caoutchouc qui doit être levé pour être libéré, photo 8.
- Une fois cela effectué, le carénage devrait pouvoir glisser vers l'avant et être enlevé de la moto. *La photo 9 montre les points de fixation finaux sur le haut des tunnels d'admission dont le carénage doit être libéré et le cache plastique de radiateur suivra le carénage.*
- Couper le bandeau de mousse fourni en pièces de 10mm puis collez-les au bas du cadre de protection radiateur, de façon à ce qu'elles se placent entre la protection radiateur et le radiateur.
- Coller un bandeau de mousser à l'avant du radiateur dans le coin supérieur droit lorsqu'on le regarde de face. Cet endroit de la grille de la protection radiateur se place entre le radiateur et la ligne d'ABS et les supports, voir photo 12.
- Enlever le boulon qui fixe le bas du radiateur en place, voir photo 10.
- Monter la grille de protection R&G en place et glissez la vers le haut de façon à ce que le coin supérieur se place entre le radiateur et les lignes ABS, voir photos 11 & 12. *Il y a un trou additionnel sur le coin supérieur qui peut aussi être utilisé pour fixer la grille de protection radiateur en place en utilisant un des colliers de serrage fourni puis encerclez le dans la matrice de radiateur. Cela est conseillé si l'installation s'effectue sur une moto de piste ou les lignes ABS et les supports ont été enlevés, voir photo 13.*
- Prendre le collier de serrage restant et encerclez le dans le trou sur le coin supérieur restant de la grille de protection radiateur puis autour du support supérieur de radiateur, avant de serrer, voir photos 14 & 15.
- Réinsérer le boulon d'origine dans le support inférieur de la grille de protection radiateur puis serrer dans le patron fileté du radiateur, voir photo 16.
- Veiller à ce que la grille de protection radiateur soit correctement montée avant de serrer les 2 colliers de serrage et le boulon inférieur.
- Remonter le carénage du côté droit, en procédant à l'inverse de la façon dont il a été enlevé.

ISSUE 1 25/04/2017 (AR)

### **Notice disponible sur [www.rg-racing.com](http://www.rg-racing.com)**

#### **CONSUMER NOTICE**

The catalogue description and any exhibition of samples are only broad indications of the Products and R&G may make design changes which do not diminish their performance or visual appeal and supplying them in such state shall conform to the order. The Buyer acknowledges no representation or warranty (other than as to title) has been given or will apply to the Products other than those in R&G's order or confirmation and the Buyer confirms it has chosen the Products as being of merchantable quality and suitable for its particular purposes. Where R&G fits the Products or undertakes other services it shall exercise reasonable skill and care and rectify any fault free of charge unless the workmanship has been disturbed. The Buyer is responsible for ensuring that the warranty on the motorcycle is not affected by the fitting of the Products. On return of any defective Products R&G shall at its option either supply a replacement or refund the purchase money but shall not be liable if the Products have been modified or used or maintained otherwise than in accordance with R&G's or manufacturer's instructions and good engineering practice or if the defect arises from accident or neglect. Other than identified above and subject to R&G not limiting its liability for causing death and personal injury, it shall not be liable for indirect or consequential loss and otherwise its liability shall be limited to the amounts paid by the Buyer for the Products or the fitting or service concerned. These terms do not affect the Buyer's statutory rights.

#### **R&G RACING RETURNS POLICY (NON-FAULTY GOODS)**

Returns must be pre-authorized (if not pre-authorized the return will be rejected). Goods may only be returned direct to us if they were purchased direct from us (customer must prove if necessary). Otherwise to be returned to original vendor. Goods must be in re-sellable condition, in the opinion of R&G Racing. All returns are subject to a 25% restocking and handling fee (25% of the gross value exc. P&P – at the prevailing price at time of purchase). The customer must pay any and all carriage charges. No returns of discontinued products, unless within 14 days of purchase. This policy does not affect your statutory rights and does not refer to faulty goods.

R&G Racing

Unit 1, Shelley's Lane, East Worldham, Alton, Hampshire, GU34 3AQ

Tel: +44 (0)1420 89007 Fax: +44 (0)1420 87301 [www.rg-racing.com](http://www.rg-racing.com) Email: [info@rg-racing.com](mailto:info@rg-racing.com)